



# PRODUCT CATALOG

HOSPITALITY

INDUSTRIAL

NAPERY

MADE-TO-ORDER



At Regent, our goal is quite simple. We want to exceed your expectations in each and every way. For more than ninety years, our family has been dedicated to serving independent textile rental businesses. Your success is our success, which is why we are committed to providing you with top-quality uniform apparel and napery products at an outstanding value.

We recognize that a broad and diverse product offering is important when choosing a supplier. For this reason, we have invested our resources to bring you superior hospitality and industrial uniform apparel and napery products. And when you need them, our made-to-order capabilities allow you to build customized programs on time and on budget. Our comprehensive offering allows you to spend more time servicing your customers and less time sourcing the goods they need.

We've built a reputation of providing our customers exceptional service through four generations of commitment from our family. It is truly our pleasure to continue this tradition for generations to come. Most of all, we look forward to exceeding your expectations.

All the best,

Gregory Miller

Lisa Miller

John Miller



# TABLE OF CONTENTS

## HOSPITALITY 6-21

Chef Coats .....	8-11
Cook Shirts & Bus Coats .....	12-13
Pants.....	14
Aprons.....	15
Housekeeping & Accessories....	16
Lab Coats.....	17-18
Meat Coats & Wraps.....	18-21

## INDUSTRIAL 22-27

Shirts.....	24-25
Pants.....	26
Coveralls.....	27

## NAPERY 28-31

## MADE-TO-ORDER 32-41

**MADE IN AMERICA**  
BY REGENT



---

---

---

For more than ninety years, Regent has been proudly manufacturing products in the United States of America. As our business has grown, we have been fortunate to bring manufacturing jobs to the people of Mexico and the Dominican Republic, all while continuing our operations right here in the United States. We recognize and value the importance of Made in America products, and what it means to you and your customers.

Today, more and more companies seek to outfit their American workers in uniforms made by American workers. With so many apparel manufacturing companies moving their plants to countries around the globe, sourcing domestically made goods has become a challenge. When your customers demand it, count on Regent for uniforms Made in America.

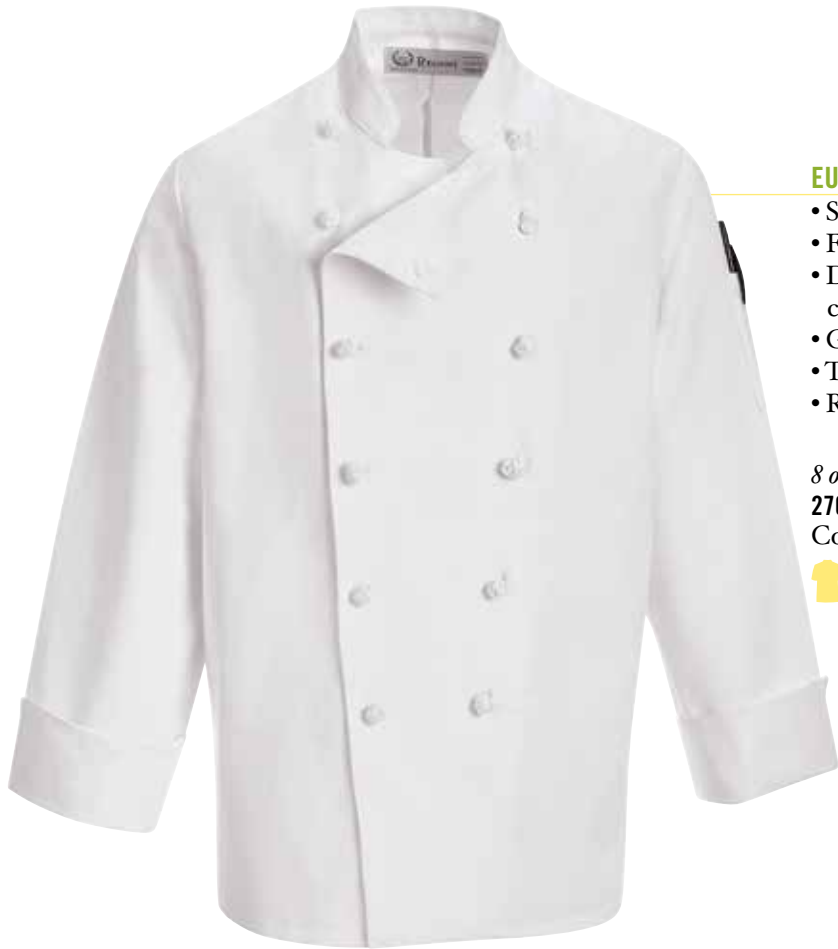
In an ever changing environment, Regent has maintained an ongoing commitment to our customers and employees by increasing manufacturing capabilities in both our California and Pennsylvania facilities. We stand ready to serve you. Call today to speak with a team member to learn more about what we can make for you... in America.

Made in America by Regent. Just one more way we work hard to exceed your expectations.









**EUROPEAN KNOT BUTTON CHEF COAT** IL LS HW

- Stand-up collar
- French-cut front
- Double-breasted with twelve pass-through cloth knot buttons
- Grommets for underarm ventilation
- Thermometer pocket on left sleeve
- Rounded cuffs

8 oz., 100% Cotton Twill

**270PF-COT**

**S-5XL**

Color: White (WH)

 ALSO AVAILABLE IN  
SHORT SLEEVE

**EUROPEAN PLASTIC BUTTON CHEF** IL LS HW

- Stand-up collar
- French-cut front
- Double-breasted with twelve white buttons
- Thermometer pocket on left sleeve
- Rounded cuffs

7 oz., 100% Spun Polyester Plain Weave

**230-SPUN**

**S-5XL**

Color: White (WH)

 ALSO AVAILABLE IN  
SHORT SLEEVE





**KNOT BUTTON CHEF COAT** IL LS HW

- Stand-up collar
- Double-breasted with ten pass-through cloth knot buttons
- Left chest pocket
- Thermometer pocket on left sleeve

7 oz., 65% Polyester / 35% Cotton Twill

**199PF S-5XL**

Color: White (WH)

8 oz., 100% Cotton Twill

**199PF-COT S-4XL**

Color: White (WH)

7 oz., 100% Spun Polyester Twill

**199PF-SPUN S-5XL**

Color: White (WH)

7 oz., 100% Spun Polyester Plain Weave

**199PF-SPUN-PW S-5XL**

Color: White (WH)



**PEARL BUTTON CHEF COAT** IL LS HW

- Stand-up collar
- Double-breasted with ten non-yellowing pearl buttons
- Left chest pocket
- Thermometer pocket on left sleeve

7 oz., 65% Polyester / 35% Cotton Twill

**199P S-5XL**

Color: White (WH)

7 oz., 100% Spun Polyester Twill

**199P-SPUN S-5XL**

Color: White (WH)

7 oz., 100% Spun Polyester Plain Weave

**199P-SPUN-PW S-5XL**

Color: White (WH)





**BLACK CHEF COAT** IL LS HW

- Stand-up collar
- Double-breasted with ten black buttons
- Left chest pocket
- Thermometer pocket on left sleeve

7 oz., 100% Spun Polyester Twill  
**199PBK-SPUN** S-5XL  
Color: Black (BK)

 ALSO AVAILABLE IN  
SHORT SLEEVE

**BLACK TRIM CHEF COAT** IL LS HW

- Stand-up collar
- Double-breasted with black trim and ten black buttons
- Left chest pocket
- Thermometer pocket on left sleeve
- Rounded cuffs

7 oz., 100% Spun Polyester Plain Weave  
**196BK-SPUN** S-5XL  
Color: White with Black Trim (BT)

 ALSO AVAILABLE IN  
SHORT SLEEVE



**BLACK BUTTON CHEF COAT** IL LS HW

- Stand-up collar
- Double-breasted with ten black buttons
- Left chest pocket
- Thermometer pocket on left sleeve

7 oz., 100% Spun Polyester Twill

**199P-BB-SPUN** S-5XL

Color: White (WH)



**SHORT SLEEVE\* CHEF COAT** IL LS HW

- Stand-up collar
- Double-breasted with ten non-yellowing pearl buttons
- Left chest pocket
- Thermometer pocket on left sleeve

7 oz., 100% Spun Polyester Twill

**199P-SPUN-SS** S-5XL

Color: White (WH)

7 oz., 65% Polyester / 35% Cotton Twill

**199P-SS** S-5XL

Color: White (WH)

7 oz., 100% Spun Polyester Plain Weave

**199P-SPPW-SS** S-5XL

Color: White (WH)

\*All chef coat styles available in short sleeve. Call for details.



**MILITARY BUS COAT** IL LS HW

- Stand-up collar
- Single-breasted with four non-yellowing pearl buttons
- Left chest pocket, two lower pockets
- Hemmed sleeves

7 oz., 65% Polyester / 35% Cotton Twill

**95MC S-5XL**

Color: White (WH)



**BLACK COOK SHIRT** IL LS HW

- Five-gripper front
- Left chest pocket
- Squared bottom to tuck in or wear out

5 oz., 100% Spun Polyester Poplin

**139SN-BK-SPUN S-5XL**

Color: Black (BK)

**COOK SHIRT** IL LS HW

- Five-gripper front
- Left chest pocket
- Squared bottom to tuck in or wear out

4 oz., 80% Polyester / 20% Cotton Poplin

**139SN S-5XL**

Color: White (WH)

4.5 oz., 100% Spun Polyester Poplin

**139SN-SPUN S-5XL**

Color: White (WH)



**POCKETLESS COOK SHIRT** IL LS HW

- Five-gripper front
- Squared bottom to tuck in or wear out

4 oz., 80% Polyester / 20% Cotton Poplin

**139SN NP S-5XL**

Color: White (WH)



**BAGGY CHEF PANT** IL LS HW

- Full-elastic waist with drawstring
- Zipper fly
- Two side seam pockets
- Two back patch pockets

7 oz., 100% Spun Polyester Twill

**966BK-SPUN S-5XL**

Color: Black (BK)

7 oz., 100% Spun Polyester Plain Weave

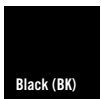
**966CH-SPUN S-5XL**

Color: Black & White  
Houndstooth (BW)

7 oz., 100% Spun Polyester Plain Weave

**966GS-SPUN S-4XL**

Color: Gangster Stripe (GS)



**COOK PANT** IL LS HW

- Snap closure and zipper fly
- Two side seam pockets
- Two back patch pockets

7 oz., 65% Polyester / 35% Cotton Twill

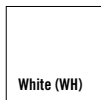
**975-SN-WT TWL 28-50**

Color: White (WH)

7 oz., 100% Spun Polyester Yarn Dye

**975CH-SN-SPUN-YD 28-50**

Color: Black & White Check (YD)



**WOMEN'S COOK PANT** IL LS HW

- Button closure and zipper fly
- Side-elastic waist
- Two front slant pockets
- Two spade-style back pockets

7 oz., 65% Polyester / 35% Cotton Twill

**977BK 2-26**

Color: Black (BK)



### DEFENDER BIB APRON IL LS HW

- Filament Polyester resists dirt, oil and grime
- Strong, colored polyester ties
- Cut Size: 28" x 34"

6.1 oz., 100% Polyester

**DBA001** **ONE SIZE**

Colors: White (WH), Red (RD),  
Forest Green (FG) and Black (BK)



### DEFENDER THREE-POCKET BIB APRON IL LS HW

- Chest pocket and two lower pockets
- Filament Polyester resists dirt, oil and grime
- Strong, colored polyester ties
- Cut Size: 28" x 34"

6.1 oz., 100% Polyester

**DBA002** **ONE SIZE**

Colors: White (WH), Red (RD),  
Forest Green (FG) and Black (BK)

### FOUR-WAY BAR APRON IL LS HW

- Available in a wide array of fabrics and colors,  
please call for more information.
- Cut Size: 30" x 36"



### BISTRO APRON IL LS HW

- Available in a wide array of fabrics and colors,  
please call for more information.
- Cut Size 30" x 36"



**PRINCESS DRESS** IL LS HW

- Easy fit
- One-piece, lined, notched lapel collar
- Eight pearl buttons
- Shapely princess seams
- Two lower pockets

5 oz., 80% Polyester / 20% Cotton Poplin  
**554** **32-50 (CHEST)**  
Color: Light Blue (LB)



**NECKERCHIEF** IL LS HW

- 20" x 40" triangle with soil release finish

5 oz., 80% Polyester / 20% Cotton Poplin  
**SCARF-WT POP** **ONE SIZE**  
Color: White (WH)



**CHEF HAT** IL LS HW

- Adjustable brass tab closure

5 oz., 100% Cotton Twill  
**715CG** **ONE SIZE**  
Color: White (WH)



**SKULL CAP** IL LS HW

- Elastic insert for comfortable fit.

7 oz., 65% Polyester / 35% Cotton Twill  
**722E** **S-L**  
Color: Black (BK), White (WH)



**LAB COAT** IL LS HW

- One-piece, lined collar with notched lapel
- Hand slit openings
- Five non-yellowing pearl buttons
- Left chest pocket with pencil stall and two lower pockets

5 oz., 80% Polyester / 20% Cotton Poplin

**925** **34-60**

Color: White (WH)



**LAB COAT** IL LS HW

- One-piece, lined collar with notched lapel
- Hand slit openings
- Five gripper closure
- Interior chest pocket with pencil stall and two lower pockets

5 oz., 80% Polyester / 20% Cotton Poplin

**874** **S-5XL**

Color: White (WH)

**LAB COAT** IL LS HW

- One-piece, lined collar with notched lapel
- Hand slit openings
- Five gripper closure
- Pocketless

5 oz., 80% Polyester / 20% Cotton Poplin

**895** **S-5XL**

Color: White (WH)





**LAPEL COAT** IL LS HW

- One-piece collar with notched lapel
- Three non-yellowing pearl buttons
- Left chest pocket with pencil stall and two lower pockets
- Rounded hemmed front

5 oz., 80% Polyester / 20% Cotton Poplin

926 34-56

Color: White (WH)

**MEAT FROCK** IL LS HW

- One-piece collar with notched lapel
- Left chest pocket and two lower pockets
- Six-gripper front closure
- Hand slit openings

7 oz., 100% Spun Polyester Plain Weave

495 S-5XL

Color: White (WH)



**MEAT FROCK** IL LS HW

- One-piece collar with notched lapel
- Inside left chest pocket and two lower pockets
- Six-gripper front closure
- Hand slit openings

7 oz., 100% Spun Polyester Plain Weave

**492** S-5XL

Color: White (WH)



**MEAT FROCK** IL LS HW

- One-piece collar with notched lapel
- Inside left chest pocket
- Six-gripper front closure
- Hand slit openings

7 oz., 100% Spun Polyester Plain Weave

**494** S-5XL

Color: White (WH)



**SHAWL COLLAR WRAP SMOCK** IL LS HW

- Left chest pocket and two lower pockets
- Reversible nylon-tie closure
- Hand slit openings

7 oz., 65% Polyester / 35% Cotton Twill

924 S-5XL

Color: White (WH)

**LONG SLEEVE WRAP SMOCK** IL LS HW

- Divided left chest pocket and two lower pockets
- Reversible self-tie closure
- Hand slit openings

5 oz., 80% Polyester / 20% Cotton Poplin

256 S-5XL

Color: White (WH)



**3/4 SLEEVE WRAP SMOCK** IL LS HW

- Inside left chest pocket and two lower pockets
- Reversible self-tie closure
- Hand slit openings

*5 oz., 80% Polyester / 20% Cotton Poplin*

**963 S-5XL**

Color: White (WH)



**1/2 SLEEVE WRAP SMOCK** IL LS HW

- Divided left chest pocket and two lower pockets
- Reversible self-tie closure
- Hand slit openings

*5 oz., 80% Polyester / 20% Cotton Poplin*

**255 S-5XL**

Color: White (WH)





INDUSTRIAL

**INDUSTRIAL WORK SHIRT - LONG SLEEVE** IL LS HW

- One-piece, lined collar with stays
- Six-button front with gripper at neck
- Two button-thru hex-style pockets with pencil stall on left pocket

4.25 oz., 65% Polyester / 35% Cotton Poplin

**2512** S-5XL (REG) M-2XL (LONG)

Color: Blue/White Stripe (BS)

**2552** S-3XL (REG)

Color: Red (RD)

**2553** S-5XL (REG)

Color: Grey (GY)

**2559** S-5XL (REG)

Color: White (WH)

**2564** S-5XL (REG) M-2XL (LONG)

Color: Navy (NV)

**2568** S-3XL (REG)

Color: Spruce Green (SG)

**2574** S-5XL (REG)

Color: Light Blue (LB)

**2575** S-5XL (REG)

Color: Light Tan (LT)

5.25 oz., 100% Wrinkle Resistant Cotton Fine Line Twill

**1564W** S-3XL (REG)

Color: Navy (NC)







**INDUSTRIAL WORK SHIRT - SHORT SLEEVE** IL LS HW

- One-piece, lined collar with stays
- Six-button front with gripper at neck
- Two button-thru hex-style pockets with pencil stall on left pocket

*4.25 oz., 65% Polyester / 35% Cotton Poplin*

**2512E S-5XL (REG) M-2XL (LONG)**

Color: Blue/White Stripe (BS)

**2552E S-3XL (REG)**

Color: Red (RD)

**2553E S-5XL (REG)**

Color: Grey (GY)

**2559E S-5XL (REG)**

Color: White (WH)

**2564E S-5XL (REG)**

Color: Navy (NV)

**2568E S-3XL (REG)**

Color: Spruce Green (SG)

**2574E S-5XL (REG)**

Color: Light Blue (LB)

**2575E S-5XL (REG)**

Color: Light Tan (LT)

*5.25 oz., 100% Wrinkle Resistant Cotton*

*Fine Line Twill*

**1564H S-5XL (REG)**

Color: Navy (NC)





### INDUSTRIAL WORK PANT **IL LS HW**

- Traditional fit
- Set waistband with button closure
- Slack-style front pockets and two set-in back pockets

*7.25 oz., 65% Polyester / 35% Cotton Twill*

**2663 30-60**

Color: Charcoal (CH)

**2664 30-60**

Color: Navy (NV)

**2668 30-60**

Color: Spruce Green (SG)

**2675 30-60**

Color: Chocolate Brown (BN)

**NE-2680 28-50**

Color: Black (BK)

*8.25 oz., 100% Wrinkle Resistant Cotton Twill*

**1664W 30-50**

Color: Navy (NC)

### EASY-FIT WORK PANT **IL LS HW**

- Easy fit
- Button closure
- Self-fabric waistband with side elastic for a comfortable fit
- Two front pockets and two set-in back pockets

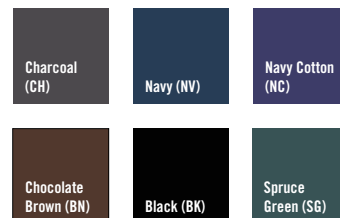
*7.25 oz., 65% Polyester / 35% Cotton Twill*

**6664 30-50**

Color: Navy (NV)

**6680 30-50**

Color: Black (BK)





#### COVERALLS **TL** **LS** **HW**

- One-piece topstitched collar
- Snap at top of zipper and lapel
- Two set-in front pockets
- Two chest pockets
- Two back patch pockets
- Rule pocket on right leg
- Action back for ease of movement
- Hemmed sleeves

*7.25, 65% Polyester / 35% Cotton*

- Concealed heavy-duty brass zipper

**2156**                      **34-52 (REG)**

Color: Tan (TN)

**2164**                      **34-52 (REG)**

Color: Navy (NV)

*8.5 oz., 100% Cotton Twill*

- Concealed button closure

**1151B**                      **34-52 (REG)**

Color: Orange (OR)

**1164B**                      **34-52 (REG)**

Color: Navy (NV)



Tan (TN)



Navy (NV)



Orange (OR)





NAPERY

FEATURING  
*Signature*  
PLUS  
*Milliken*

# NAPERY

Your customers depend on you to deliver consistent quality in napery products, both in color and construction. At Regent, we take pride in making our napery products with Milliken Signature Plus® fabrics.

We stock an array of colors in various styles and colors to suit your basic, everyday needs. The chart below allows you to see at-a-glance, what we stock. Need a special size or color? Count on our made-to-order capabilities to deliver exactly what you need.

COLOR	NAPKIN	40x41	52x52	61x61	71x71	85x85	52x114
BEIGE (7284)	■	■	■	■	■	■	■
BLACK (6297)	■	■	■	■	■	■	■
BURNT ORANGE (5251)	■						
CHOCOLATE (7979)	■						
DUSTY ROSE (1113)	■						
FOREST GREEN (3130)	■	■	■	■	■	■	■
GOLD (4866)	■	■	■	■	■	■	■
IVORY (9245)	■	■	■	■	■	■	■
MAIZE (4504)	■						
MAROON (0995)	■	■	■	■	■	■	■
MEDRITE GREY (6439)	■						
NAVY BLUE (2006)	■						
PEACH (5786)	■						
PINK (1025)	■						
RED (1598)	■						
ROYAL BLUE (2983)	■						
SANDALWOOD (7597)	■	■	■	■	■	■	■
SEAFOAM (3800)	■						
TEAL (3444)	■						
WEDGEWOOD BLUE (2228)	■						
WHITE (9680)	■	■	■	■	■	■	■



## THE *Signature* PLUS DIFFERENCE

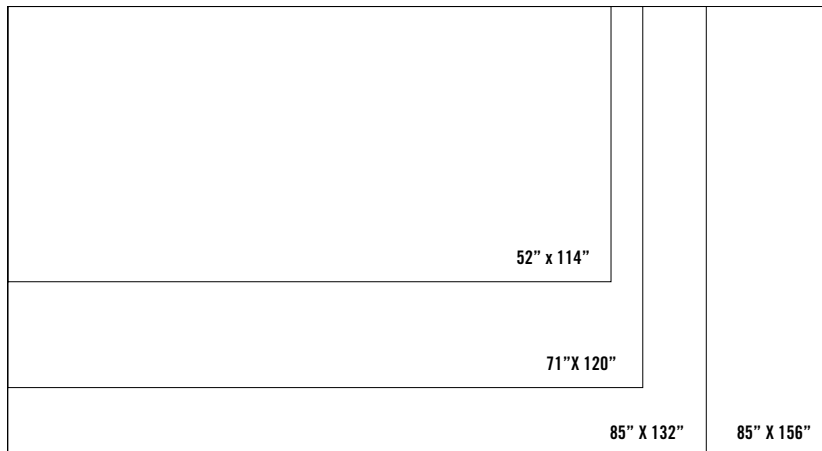
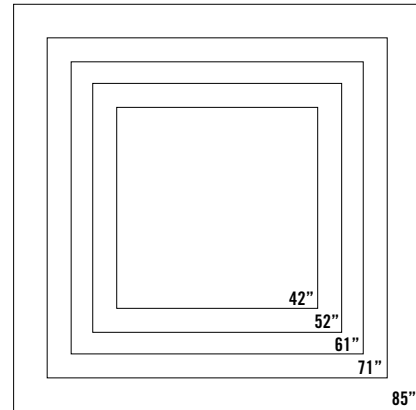
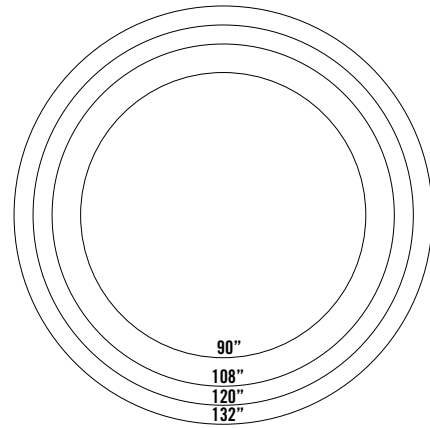
There's no substitute for Genuine Milliken Table Linens—in terms of performance, consistency, durability and value. Decades of research and technology have gone into the making of a line of table linen fabrics that sets the standard in the industry. We've chosen Milliken because they are the most innovative, cost-reducing table linens on the market.

Milliken's innovative Signature Plus™ fabric outperforms all others in terms of elegance, performance, quality, durability and value. The innovative stain release properties of Signature Plus allows for a lower water temperature of 120° (as opposed to 160°), reducing energy consumption which is better for your bottom line and the environment.

# SELECTION GUIDE

Equally as important as choosing the best table linens, is choosing the right size table cloth. Use the chart below as a guide to determining what size you need. Although we do not stock every size listed, our internal manufacturing facilities are ready to cut and sew to your specifications.

TABLE SIZE	DROP LENGTH	CLOTH SIZE
24" x 24"	13.5"	52" Square
	8.5"	41" Square
30" x 30"	27.5"	85" Square
	20.5"	71" Square
	15.5"	61" Square
	10.5"	52" Square
	5.5"	41" Square
36" x 36"	24.5"	85" Square
	17.5"	71" Square
	12.5"	61" Square
42" x 42"	7.5"	52" Square
	21.5"	85" Square
	14.5"	71" Square
	9.5"	61" Square
48" x 48"	4.5"	52" Square
	18.5"	85" Square
	11.5"	71" Square
30" x 72"	6.5"	61" Square
	Floor	85" x 156"
	24" x 21"	71" x 120"
30" x 96"	21" x 11	52" x 114"
	Floor	85" x 156"
	12" x 21"	71" x 120"
30" x 96"	9" x 11"	52" x 114"



Milliken™



**MADE TO ORDER**

---





When your customers come to you with a request for special apparel or napery products, count on Regent. We take great pride in our ability to create unique and customized garments and napery to meet your customer's needs.

Our experienced and knowledgeable staff makes the process easy. We work with you hand-in-hand through the design process and deliver samples to you quickly. Our low minimum requirements and exceptional value give you the flexibility to provide this outstanding service to both small and large accounts.

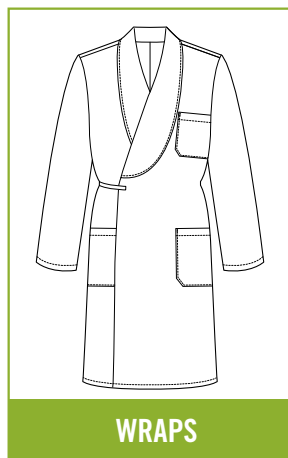
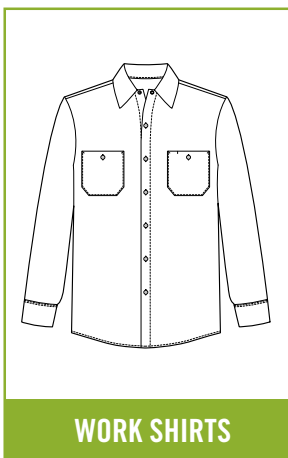
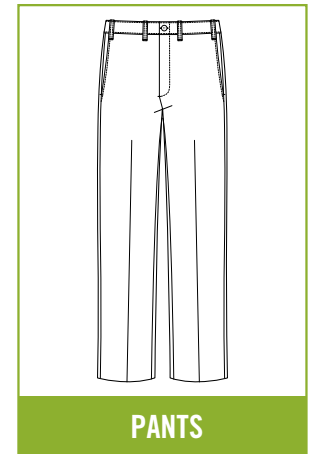
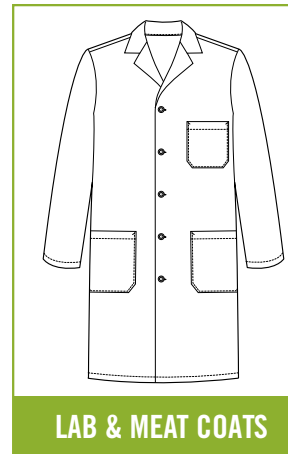
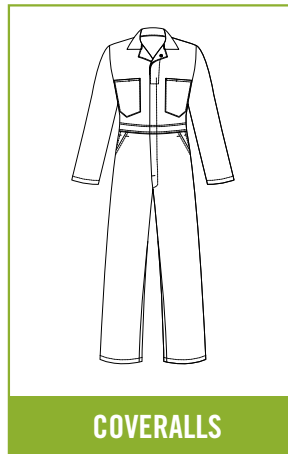
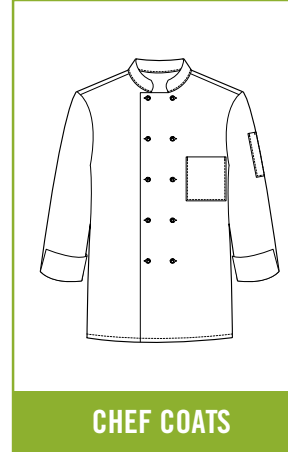
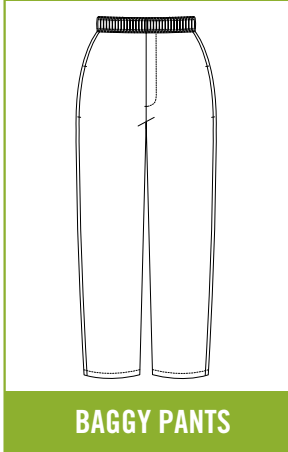
The following pages offer a glimpse of some of our capabilities in a simple step-by-step process. Our team is ready to tackle your next project. Give us a call to get started.

Made-to-Order capabilities, just one more way Regent aims to exceed your expectations.

STEP  
**1**

# BODY

Get started with your preferred body style. We have a number of basic body styles in our current line that can be modified in a number of ways. If you don't see what you need here, give us a call. Our experienced team is ready to build garments to your exact specifications.



STEP  
2

# COLOR

Many industries are utilizing color to designate job functions and/or departmental structure. In a manufacturing or food processing environment, this is an effective and efficient means of identifying workers on the job.

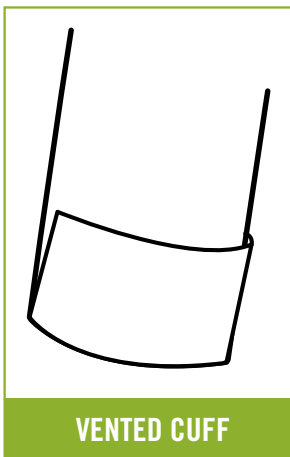
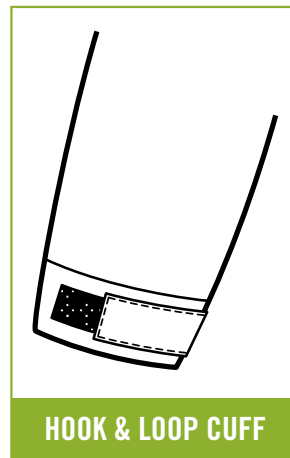
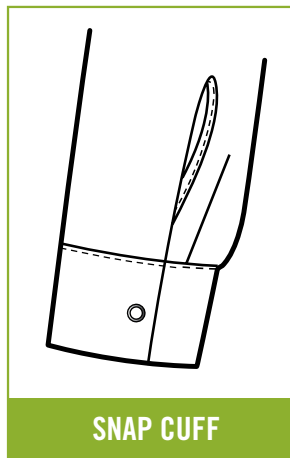
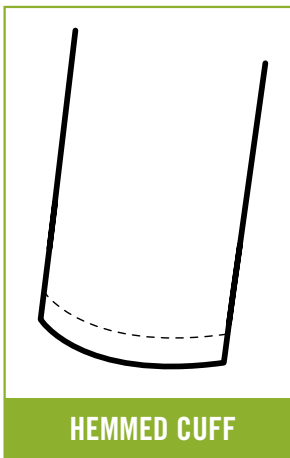
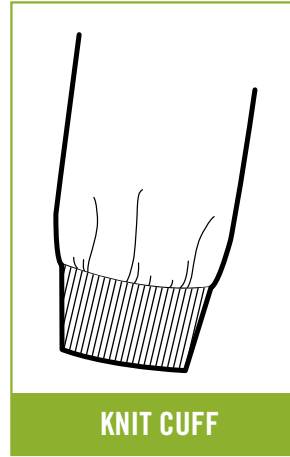
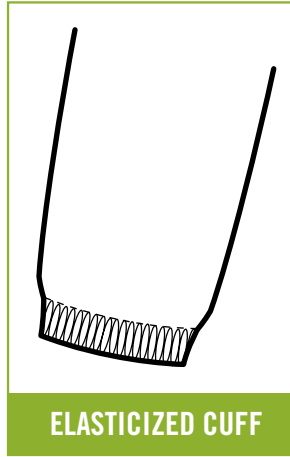
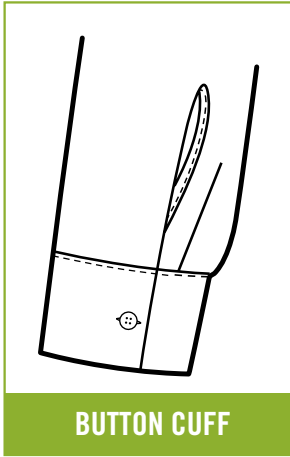
The color samples below represent our core offering. These colors can be utilized on the full garment, or strategically placed on collars, cuffs, or pockets. Custom colors are available if needed. Please contact your Regent representative for complete details.



STEP  
3

# CUFF

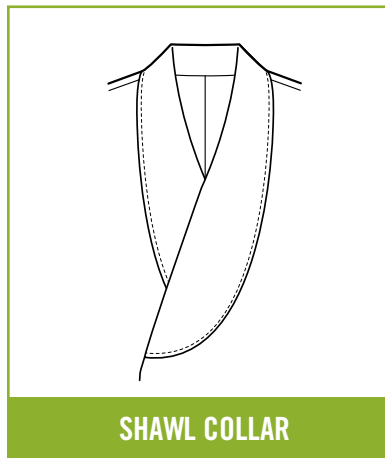
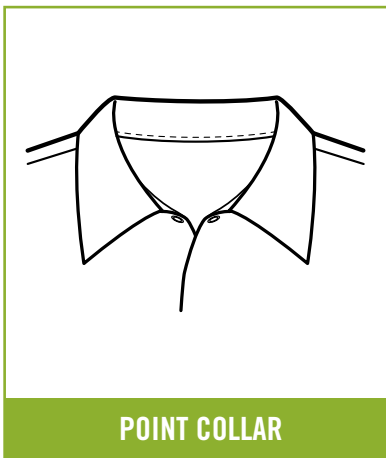
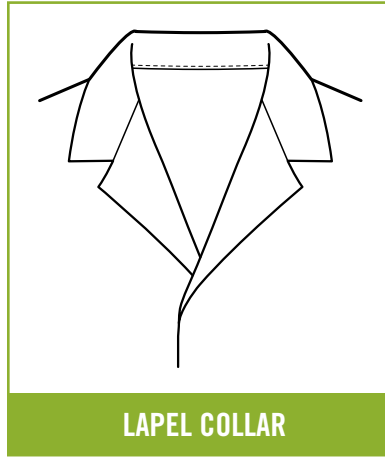
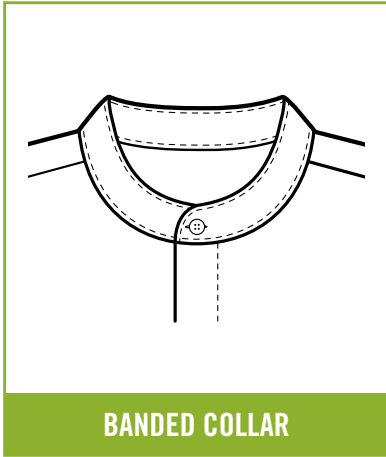
Our assortment of cuff styles allows virtually every shirt or covering to be tailored to the specific needs of the job. Regardless what the job requires, Regent can fit the need with our array of cuffs.



STEP  
4

# COLLAR

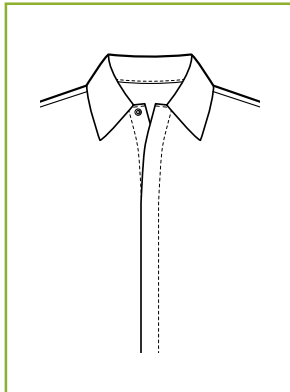
Choose a collar style to suit the needs of your customer. If you don't see what you need below, don't hesitate to call and speak with a Regent team member to discuss your needs. We are here to help.



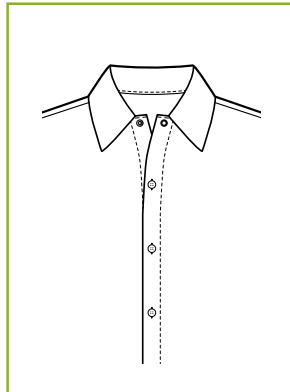
STEP  
**5**

# CLOSURE

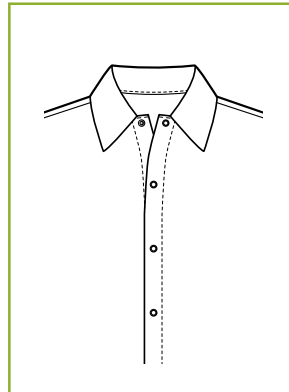
From standard to specialized, Regent offers a wide variety of closures to suit your needs and the unique needs of your customer.



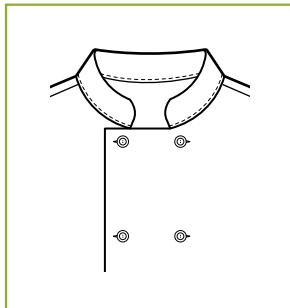
**HIDDEN CLOSURE**



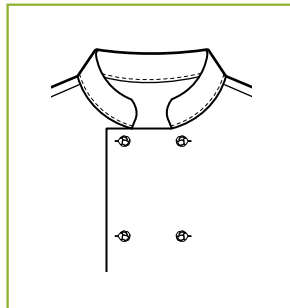
**BUTTON CLOSURE**



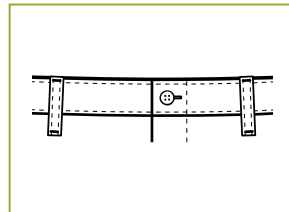
**GRIPPER CLOSURE**



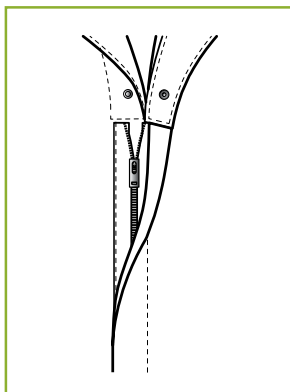
**PEARL BUTTONS**



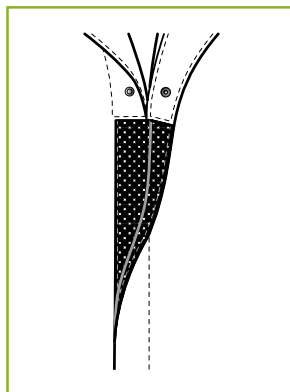
**CLOTH KNOT BUTTONS**



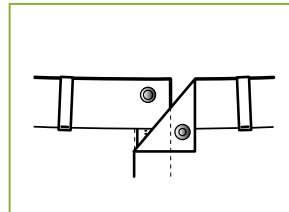
**BUTTON WAIST**



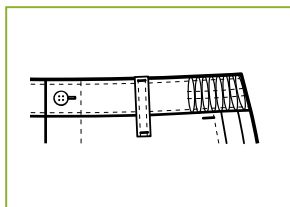
**ZIPPER CLOSURE**



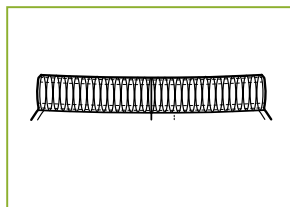
**HOOK & LOOP CLOSURE**



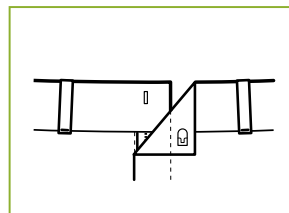
**SNAP WAIST**



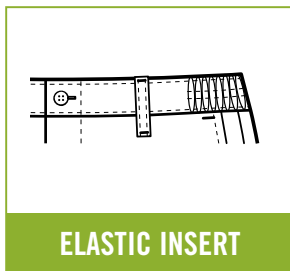
**ELASTIC INSERT**



**ELASTIC WAIST**



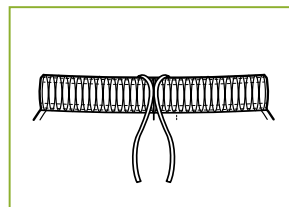
**HOOK & EYE WAIST**



**ELASTIC INSERT**



**ELASTIC WAIST**

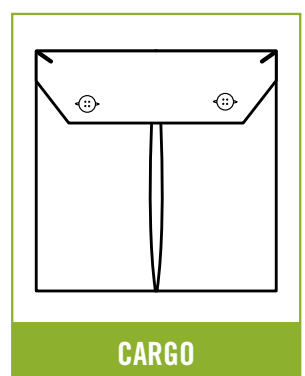
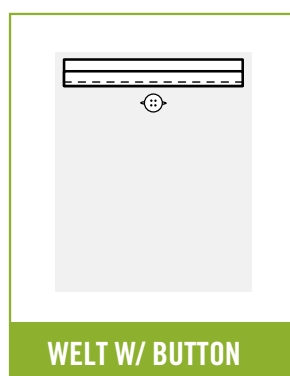
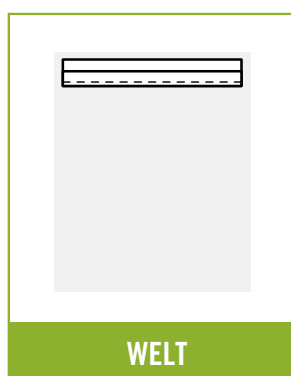
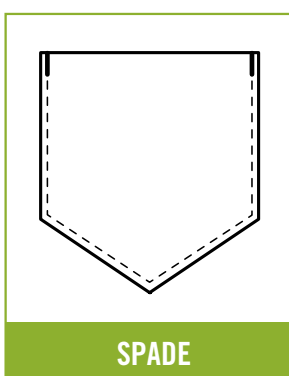
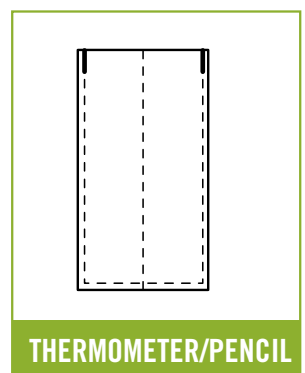
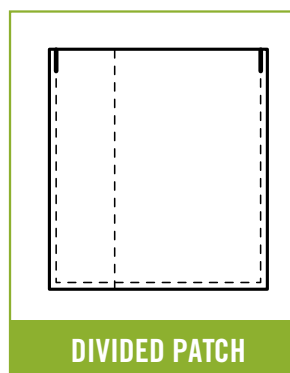
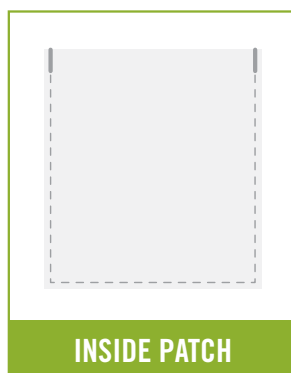
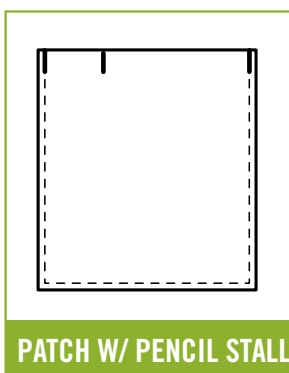
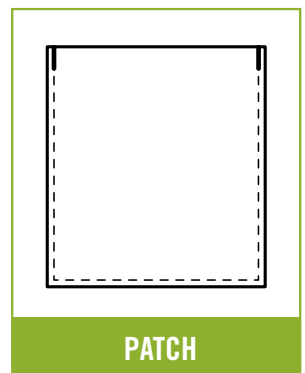
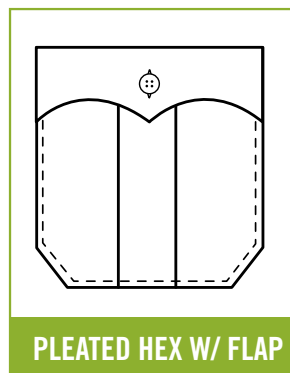
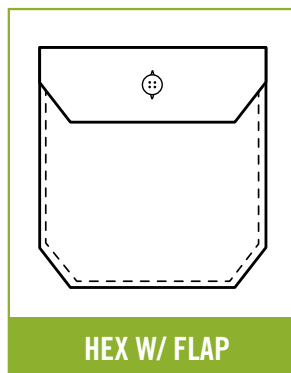
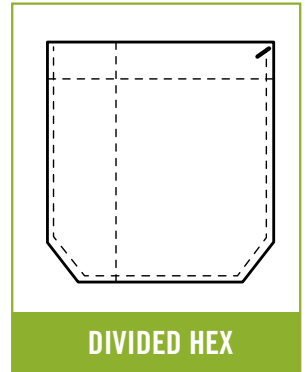
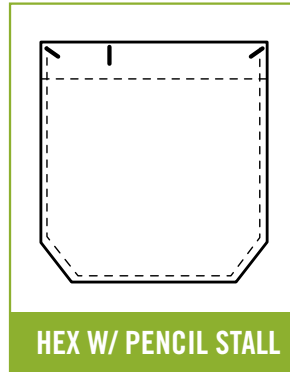
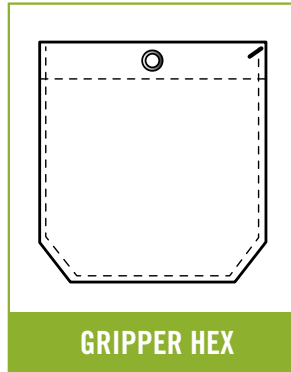
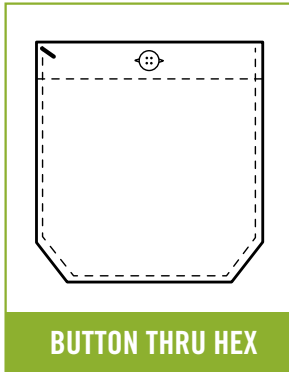


**DRAWSTRING WAIST**

STEP  
6

# POCKETS

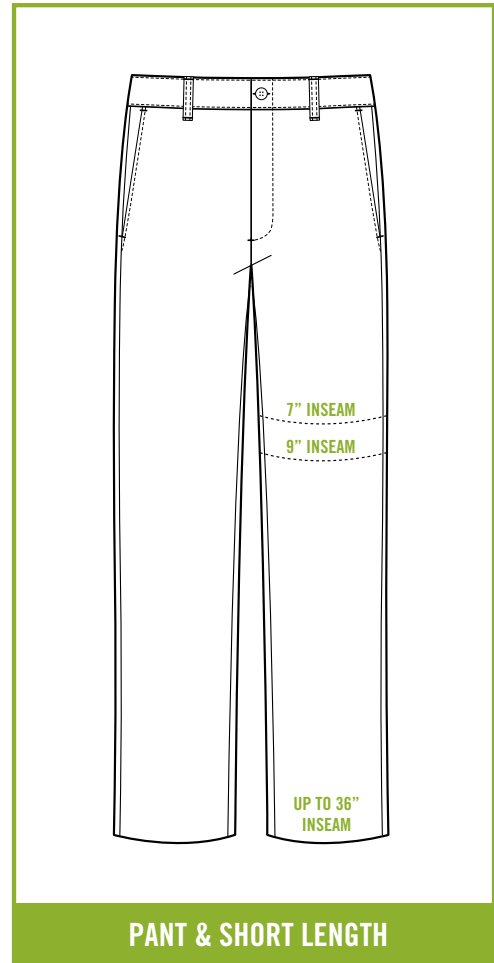
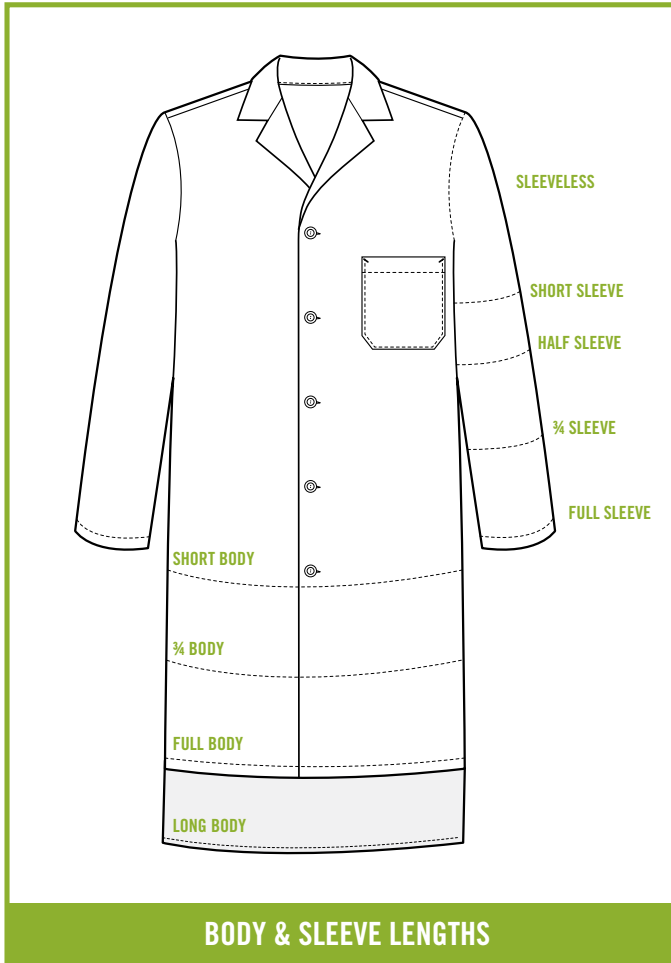
The style and placement of pockets is a key component of functional work wear. Make a selection from a number of the options below. We have pocket styles to suit a variety of needs and our made-to-order capability allows strategic placement for increased functionality and improved ergonomics.



STEP  
7

# LENGTH

There are a variety of options for length adjustments. Whether it's tailoring a body or sleeve length for a specific application, or something as simple as hemming pants to shorts, Regent stands ready for the challenge.

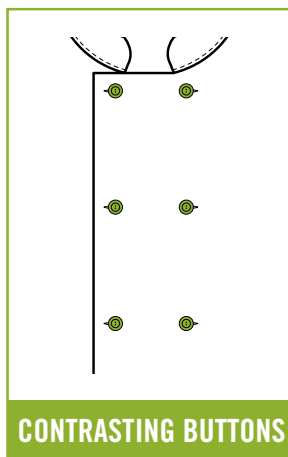
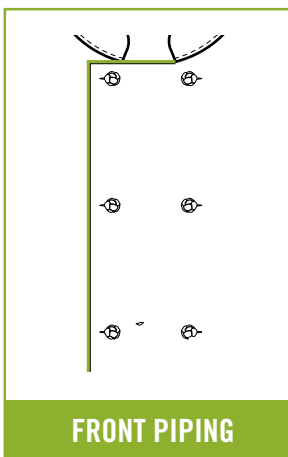
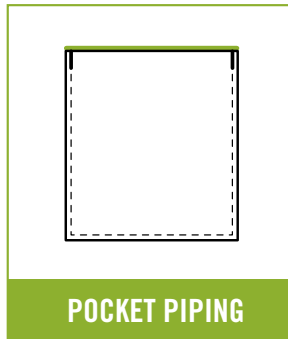
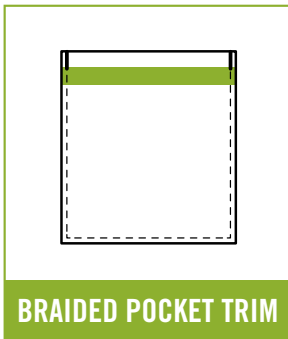
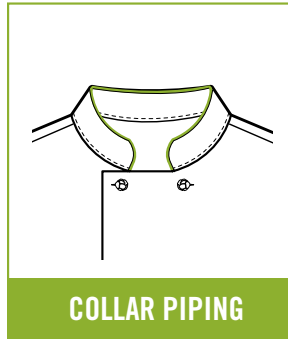
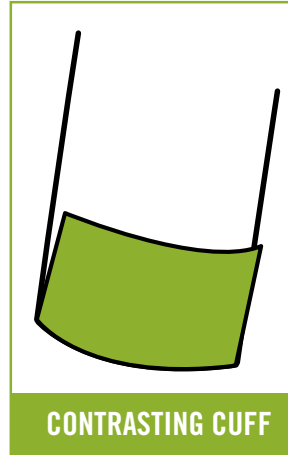
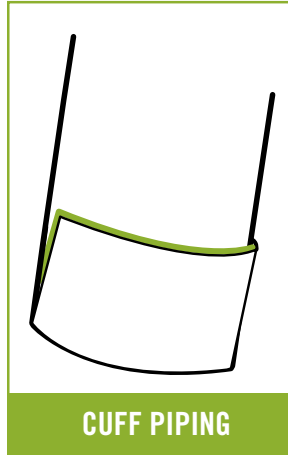
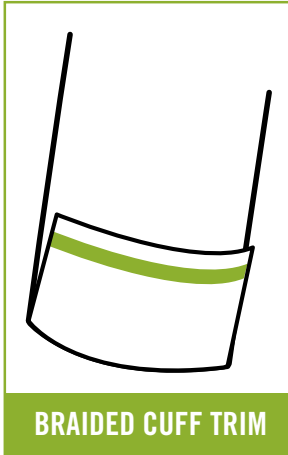




STEP  
8

# TRIMS

The addition of trims adds a pleasing aesthetic to any uniform. Aside from the decorative appeal, trims are an effective method of identifying workers by functional area.



# THE REGENT NETWORK

We have built a strategic supply chain and distribution network to allow us to service customers with greater efficiency. Through our use of company-owned resources we have greater control and flexibility of the entire process. From the time of sale, through manufacturing and distribution, we manage the entire process to meet your needs.

## COMPANY HEADQUARTERS

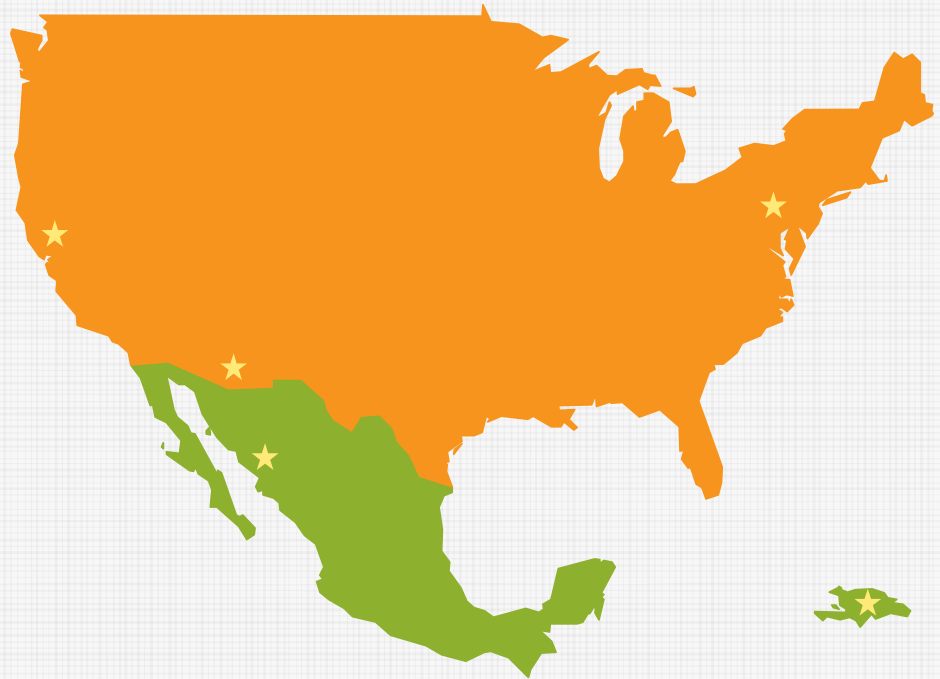
South San Francisco, CA  
*Sales, Manufacturing & Distribution*  
**PH: 800-326-2065**  
**FAX: 415-552-8622**

Allentown, PA  
*Sales, Manufacturing & Distribution*  
**PH: 610-266-1001**  
**FAX: 610-266-0220**

Nogales, AZ  
*Distribution*

Hermosillo, Mexico  
*Manufacturing & Distribution*

Dominican Republic  
*Manufacturing*



255 Utah Avenue, South San Francisco, CA 94080  
800-326-2065 | [www.regentapparel.com](http://www.regentapparel.com)

CAUTION: Products featured in this catalog meet government flammability Class 1 requirements but do not provide protection from ignition sources, molten substances or chemical exposure. Product images and fabric swatches shown here are photo mechanically reproduced. As a result, colors may vary from actual fabric samples.