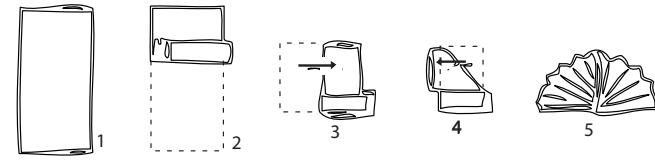


# FOLDING DIRECTIONS

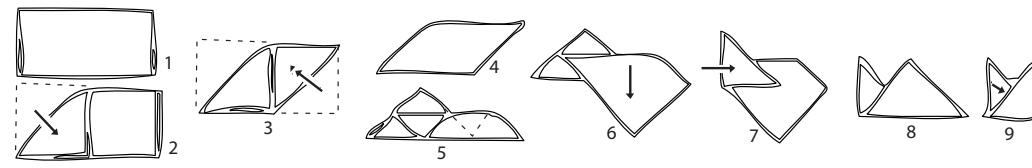
## Fan-Fare

1) Fold napkin in half 2) Start accordion folding in 3/4 inch folds from bottom to about 1/3 from top 3) Fold in half with accordion pleats on outside 4) Fold right corners into triangle over lapping at side by one inch 5) Fold one inch overlap under to create a base. Stand up and napkin will fan out.



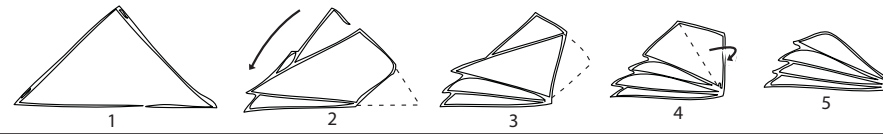
## Party Hat

1) Fold napkin in half with open edge at top 2) Fold upper left corner down 3) Fold lower right corner up 4) Turn over to match shape sketched. 5) Fold downward in half leaving small triangle at left 6) Pull hidden point at right down 7) Fold left corner towards center dividing left triangle in half 8) Fold lower triangle up 9) Turn over and tuck left corner into right pocket. Stand up.



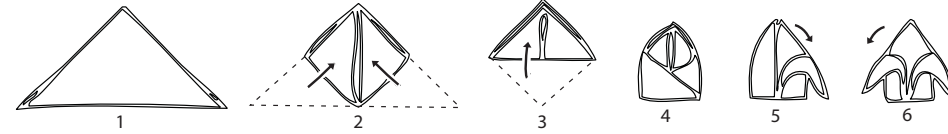
## Handkerchief

1) Start with triangle 2) Hold finger on center at bottom (arrow) and lift top center point of top layer to left 3) Lift next point to left 4) Lift next point again 5) Fold right side under to finish off.



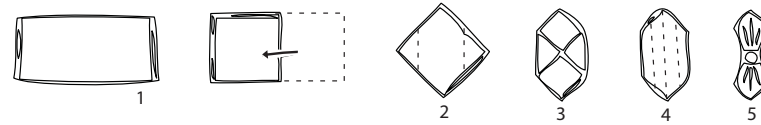
## Fanciful Butterfly

1) Fold open napkin to form triangle 2) Take left corner and fold up to center. Take right corner up to center creating diamond 3) Turn over, keeping loose points at top, then fold upward leaving margin at top to make triangle 4) Tuck the left corner into the right 5) Stand up. Turn around. Then turn petals down 6) It's a fanciful butterfly.



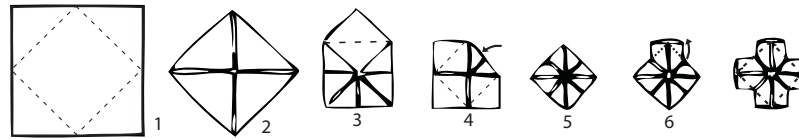
## Classic

1) Fold the napkin in quarters 2) Place it so the free corners are at top. 3) Fold the left and right corners to the center 4) Turn the napkin over and accordion pleat it into four equal pleats 5) Slip the napkin through a napkin ring.



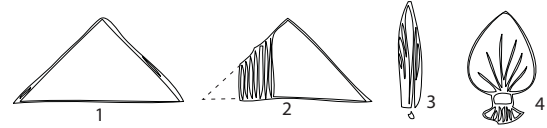
## Obi Basket

1) Fold the corners of napkin to the center 2) The napkin will look like this 3) Turn napkin over and again fold the corners to the center. 4) The napkin will look like this 5) Lift corner out and flatten. Repeat for all corners.



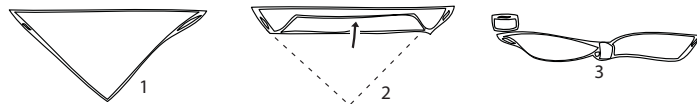
## Palm Leaf

1) Fold napkins into triangle with point to top 2) Start accordion fold in one inch folds from left to right 3) Slip folded napkin through napkin ring approximately two inches 4) Flair out top and bottom.



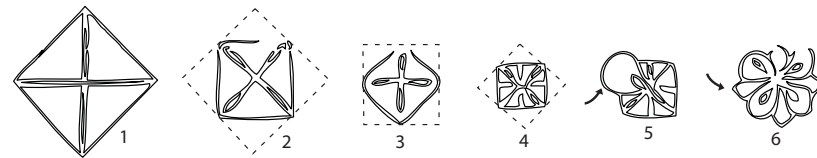
## What Knot

1) Fold napkin into triangle with points to bottom 2) Roll up from bottom. 3) Knot in center.



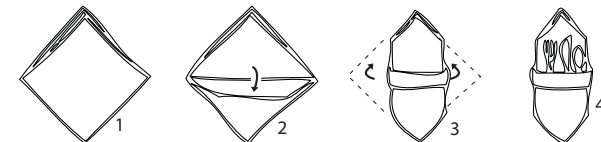
## Lotus

1) Fold all four points to center of opened napkin 2) Fold all four points to center again 3) Repeat a third time 4) Turn over and fold points to center one more time 5) Holding finger firmly at center unfold four petals from underneath each corner 6) Then pull out four more from between petals 7) Then pull out next four under the petals. Flower should have twelve points.



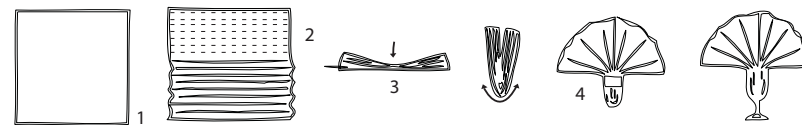
## Silver Buffet

1) Fold napkin twice to form a square 2) Hold this in diamond shape. Take two top flaps and roll halfway down napkin 3) Fold the right and left points at sides under 4) Now that you have a pocket in which to place silver: knife, fork, spoon.



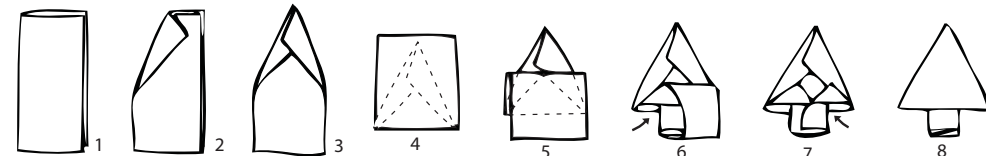
## Semi Circle

1) Open napkin flat 2) Start accordion fold in one inch folds from bottom to top 3) Place finger in center (arrow) and bring up both sides 4) Insert bottom third into napkin ring or wine glass and flair out top.



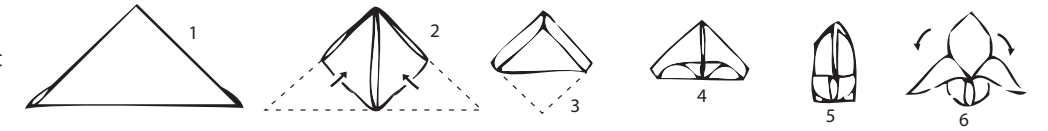
## Pine Tree

1) Fold napkin in half 2) Using upper section of half, fold toward right. 3) Do same with upper right. Tuck under excess on left 4) Fold lower half up 5) Return lower half down extending edge 1 1/2 inch below center. 6) Fold bottom left to form one half base of tree 7) Do same to right, forming full base 8) Turn over for tree.



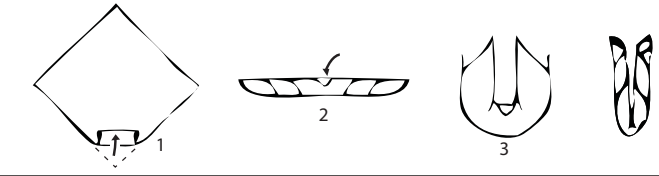
## Fleur-De-Lis

1) Fold open napkin to form triangle 2) Take left corner and fold up to center. Take right corner up to center creating diamond 3) Fold up the bottom point to within one inch at the top point 4) Fold the same point back to the bottom edge 5) Fold back sides and tuck in back. Stand napkin up 6) Pull down the left and right peaks to form fleur-de-lis.



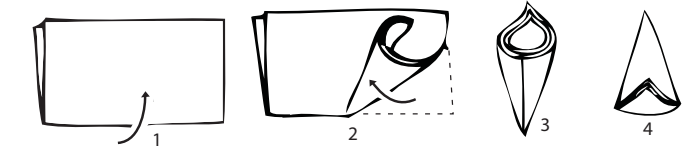
## Flute

1) Place the napkin flat on table with one corner facing you. Starting at the bottom corner, roll up the napkin 2) Hold your finger (arrow) on the last corner in the center of the completed roll 3) Holding this end in place, fold the tube in half to catch the end securely and then place the tube, curved portion down, in a glass.



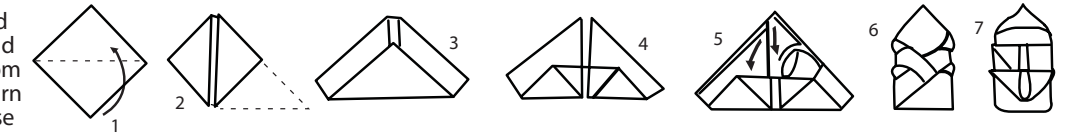
## Jester's Hat

Fold napkin in half bringing bottom to top 1) Holding center of bottom with finger, take lower right corner and loosely roll around center 2) matching corners until cone is formed 3) Turn napkin upside down, then turn up hem all around. Turn and stand on base 4.



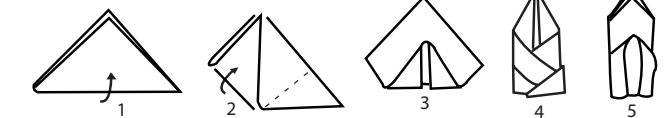
## The Lily

Fold napkin bringing bottom up to top 1) Fold corners to top 2) Fold bottom point up to 1" below top 3) Fold point back onto itself 4) Fold each of points at top down and tuck under edge of folded-up bottom and fold down one layer of top point and tuck under base fold 5) Turn napkin over and tuck left and right side into each other 6) Open base and stand 7.



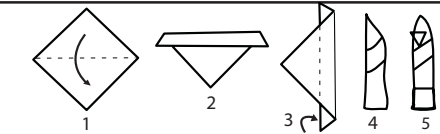
## Rosebud

Fold napkin in half diagonally 1) Fold corners to meet at top point 2) Turn napkin over and fold bottom 2/3 way up 3) Turn napkin around and bring corners together, tucking one into the other 4) Turn napkin around and stand on base.



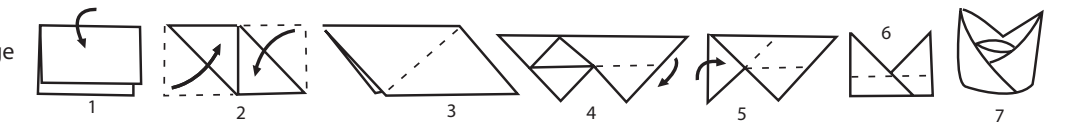
## The Candle

Fold napkin in half diagonally 1) Fold down base 1/3 way 2) Turn napkin over and roll from bottom to top 3) Tuck corners inside cuff at base of fold and stand 4) Turn one layer of point down and set on base 5.



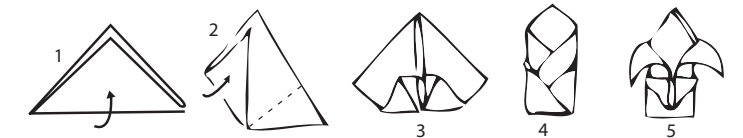
## Bishop's Mitre

Fold napkin bringing top to bottom 1) Fold corners to center line 2) Turn napkin over and rotate 1/4 turn 3) Fold bottom edge up to top edge and flip point out from under top fold 4. Turn left end into pleat at left forming a point on left side 5) Turn napkin over and turn right end into pleat forming a point on right side 6) Open base and stand upright 7.



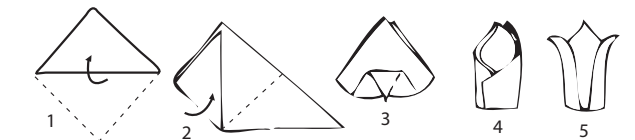
## The Crown

Fold napkin in half diagonally 1) Fold corners to meet at top point 2) Fold bottom point 2/3 way to top and fold back onto itself 3) Turn napkin over bringing corners together, tucking one into the other 4) Peel two top corners to make crown. Open base of fold and stand upright 5.



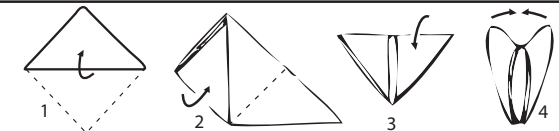
## The Cardinal's Hat

Fold napkin in half diagonally 1) Fold corners to meet at top point 2) Turn napkin over with points to the top, fold lower corner 2/3 way up 3) Fold back onto itself 4) Bring corners together tucking one into the other. Open base of fold and stand upright 5.



## Pyramid

Fold napkin in half diagonally 1) Fold corners to meet at top point 2) Turn napkin over and fold in half 3) Pick up at center and stand on base of triangle 4.



## Bird of Paradise

Fold napkin in half and in half again 1) Then fold in half diagonally with points on the top and facing up 2) Fold left and right sides down along center line, turning their extended points under 3) Fold in half on long dimension with edges facing out 4) Pull up points and arrange on fabric surface 5.

